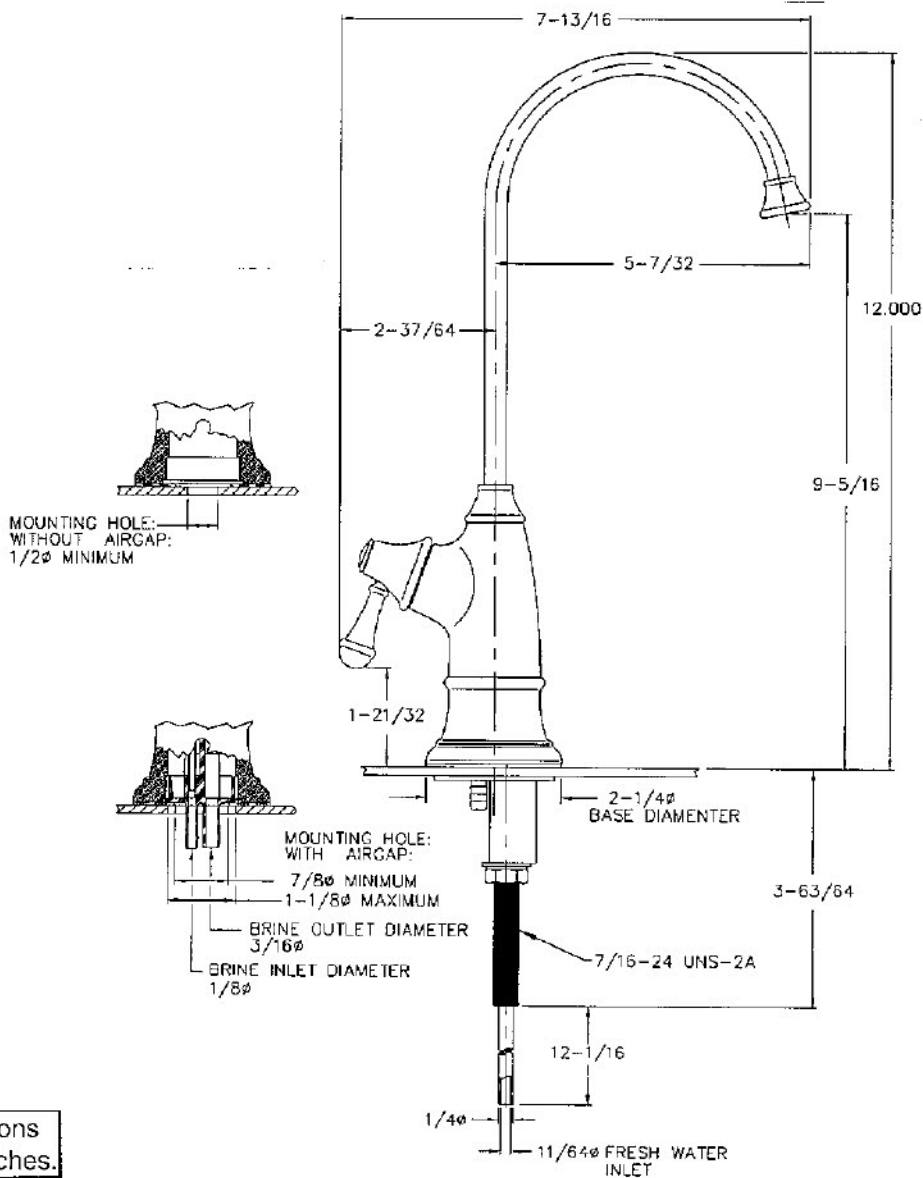


# Designer RO Faucet



Dimensions  
are in inches.



**tomlinson**<sup>®</sup>

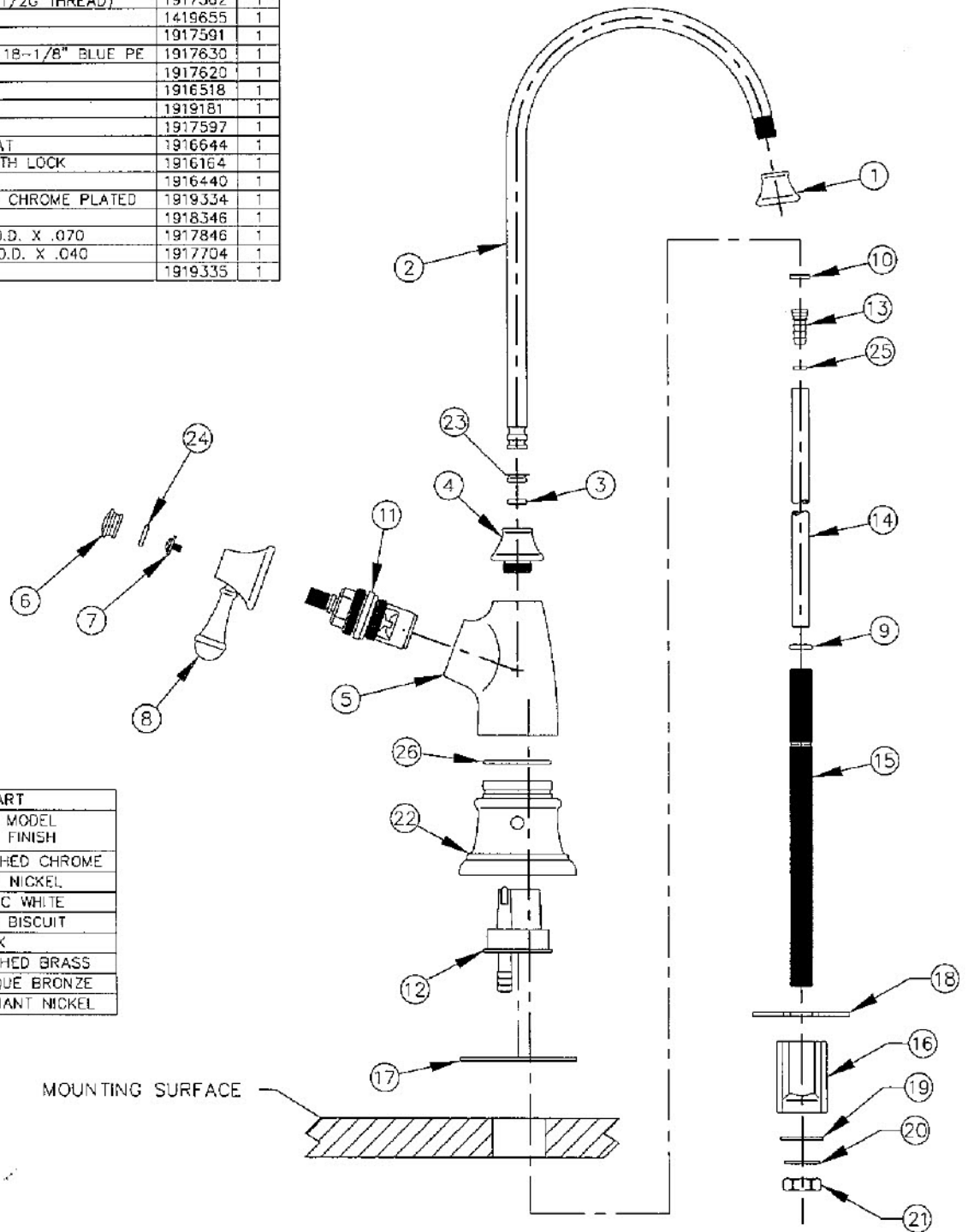
Printed in U.S.A. ©Tomlinson Industries 2005

## Technical Specifications:

The Designer RO Faucet is NSF listed to ANSI Std. 61-1999A.

<b>Spout reach:</b>	5" (127 mm)
<b>Overall height:</b>	12" (305 mm)
<b>Pressure rating:</b>	125 PSI/8.3 BAR
<b>Flow rate:</b>	
at 35 PSI/2.32BAR:	1.0 gpm
	3.785 lpm
<b>Temperature rating:</b>	40°F/4°C to 150°F/66°C
<b>Mounting hole diameter:</b>	1/2" without airgap
	7/8" with airgap

ITEM	DESCRIPTION	PART NO.	QTY.																																
1	TIP, 77PBR SPOUT CHROME PLATED	1919328	1																																
2	GOOSENECK, 78KBR CHROME PLATED	1917350	1																																
3	O'RING, 40063-3	1916647	1																																
4	CAP, 78PGL GOOSENECK LOCK CHROME PLATED	1919330	1																																
5	BODY, 600PBR BRASS CHROME PLATED W/HOLE	1919331	1																																
6	COVER, 3KPL CHROME PLATED	1917588	1																																
7	SCREW, 212-11 M4x8MM SS W/WASHER	1917587	1																																
8	HANDLE/CAP ASSY	1419654	1																																
9	O RING, 359 11.2mm X 7.65mm X 1.78mm	1918610	1																																
10	WASHER, 79K RUBBER	1917956	1																																
11	CARTRIDGE, 600KC (1/4 TURN 1/2G THREAD)	1917362	1																																
12	AIRGAP ASSY	1419655	1																																
13	INSERT, 172KSS	1917591	1																																
14	TUBING, 1/4 O.D.x.040 WALL x 18-1/8" BLUE PE	1917630	1																																
15	FITTING, 125KBRL INLET TUBE	1917620	1																																
16	SPACER, AIR GAP (PF125AG)	1916518	1																																
17	WASHER, 188KAGE NITRILE	1919181	1																																
18	WASHER, 187KAG MOUNTING	1917597	1 <tr><td>19</td><td>WASHER, 20262-3 7/16 ID FLAT</td><td>1916644</td><td>1</td></tr> <tr><td>20</td><td>WASHER, 7-729 INTERNAL TOOTH LOCK</td><td>1916164</td><td>1</td></tr> <tr><td>21</td><td>NUT, 7-803-1 7/16-24</td><td>1916440</td><td>1</td></tr> <tr><td>22</td><td>BASE, 77PBMAG MOUNT W/HOLE CHROME PLATED</td><td>1919334</td><td>1</td></tr> <tr><td>23</td><td>WASHER, 80KS FLANGED</td><td>1918346</td><td>1</td></tr> <tr><td>24</td><td>O RING, 334 .301 I.D. X .441 O.D. X .070</td><td>1917846</td><td>1</td></tr> <tr><td>25</td><td>O RING, 323 .208 I.D. X .288 O.D. X .040</td><td>1917704</td><td>1</td></tr> <tr><td>26</td><td>O RING, 1.313 X 1.176 X .070</td><td>1919335</td><td>1</td></tr>	19	WASHER, 20262-3 7/16 ID FLAT	1916644	1	20	WASHER, 7-729 INTERNAL TOOTH LOCK	1916164	1	21	NUT, 7-803-1 7/16-24	1916440	1	22	BASE, 77PBMAG MOUNT W/HOLE CHROME PLATED	1919334	1	23	WASHER, 80KS FLANGED	1918346	1	24	O RING, 334 .301 I.D. X .441 O.D. X .070	1917846	1	25	O RING, 323 .208 I.D. X .288 O.D. X .040	1917704	1	26	O RING, 1.313 X 1.176 X .070	1919335	1
19	WASHER, 20262-3 7/16 ID FLAT	1916644	1																																
20	WASHER, 7-729 INTERNAL TOOTH LOCK	1916164	1																																
21	NUT, 7-803-1 7/16-24	1916440	1																																
22	BASE, 77PBMAG MOUNT W/HOLE CHROME PLATED	1919334	1																																
23	WASHER, 80KS FLANGED	1918346	1																																
24	O RING, 334 .301 I.D. X .441 O.D. X .070	1917846	1																																
25	O RING, 323 .208 I.D. X .288 O.D. X .040	1917704	1																																
26	O RING, 1.313 X 1.176 X .070	1919335	1																																



MODEL IDENTIFICATION CHART

MODEL NUMBER	ITEM NUMBER	MODEL FINISH
600PBRAG	1019299	POLISHED CHROME
600PBRAG/SN	1019301	SATIN NICKEL
600PBRAG/AW	1019303	ARCTIC WHITE
600PBRAG/LB	1019305	LIGHT BISCUIT
600PBRAG/BLK	1019307	BLACK
600PBRAG/B	1019309	POLISHED BRASS
600PBRAG/AB	1019311	ANTIQUÉ BRONZE
600PBRAG/BN	1019444	BRILLIANT NICKEL